

Revoria Flow SC21 and SC22 Print Servers

Make more impact without adding complexity.

In fast-moving environments, workflow is key. Revoria Flow SC21 and SC22 Print Servers' powerful processing, smart automation and intuitive color controls bring advanced, high-end color capabilities within reach of smaller operations. With them, you can make more high-value applications on your Revoria Press SC285 / SC285S without added operational burden.

Make more of what matters...

Differentiation: Support for eye-catching, profit-driving 5-color jobs using Pink, Gold, Silver, Clear, White or Textured Clear Toners—in addition to CMYK.

Productivity: Fast RIP performance and automated workflows make it easier to meet demanding timelines.

Consistency: Integrated color management and automatic quality adjustments such as gradient correction, edge enhancement and bold text definition ensure reliably excellent output, job after job.

Operator confidence: Intuitive controls reduce training time and minimize setup errors.

Key features:

AI-based photo quality optimization intelligently optimizes print quality settings based on the types of images in each job, automatically improving skin tones, brightness and sharpness to achieve the best printed output.

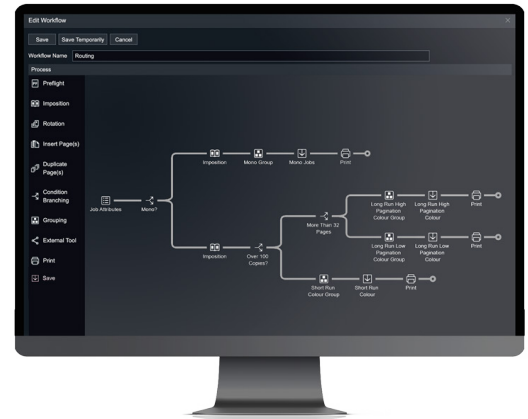
Built-in Pink, Gold and Silver-based color libraries make it easier to enhance provided jobs and meet customer-specific color requests right at the press.

Color-match previous print jobs in seconds with our User Image Color Matching (UICM) tool. Simply capture a sample of the desired output from the built-in scanner and the tool will automatically adjust color settings to replicate it. No guesswork required!



Key specifications:

	Revoria Flow SC21	Revoria Flow SC22
Processor	Intel® Xeon® E-2226GE Processor (3.4 - 4.6 GHz)	Intel® Core™ i3-9100E Processor (3.1-3.7 GHz)
Operating System	Windows 10 IoT Enterprise LTSC 2021 (64bit)	Windows 10 IoT Enterprise LTSC 2021 (64bit)
RAM Memory	32 GB (Max. 32 GB)	Max. 32 GB 16 GB (Std.) + 16 GB (Opt.)
Disk Drive(s)	HDD: 4 TB (System) SSD: 1,920 GB DVD Multi drive	HDD: 1 TB SSD: 1,920 GB (Opt.) DVD Multi Drive
APPE	APPE 6	APPE 6 (Optional)
Dimensions (WxDxH)	305mm (12.0") x 603mm (23.7") x 515mm (20.3")	305mm (12.0") x 603mm (23.7") x 515mm (20.3")
Weight	8.7 kg (19.18 lbs.)	8.6 kg (18.96 lbs.)
5th Color Support	Included	Requires an optional kit
Supported Presses	SC285 / SC285S	SC285 / SC285S



Add prepress automation to your print server.

Our optional Revoria XMF PressReady Lite software allows smaller shops to automate complex prepress tasks from one spot. It preflights files to catch and correct issues like low-resolution images, RGB color use and missing trim or bleed settings. It also groups similar jobs to optimize production and supports single-press setups with enterprise-level automation.

The result is less manual intervention, fewer errors and a standardized, high-quality workflow ready to help you make more in less time.

Revoria XMF PressReady Lite automatically:

- **Checks** supplied PDF files
- **Fixes** common issues found in PDF files
- **Groups and imposes** jobs for production
- **Generates email notifications** when issues are found



Find more information at:
print-us.fujifilm.com



FUJIFILM Print US



@FujifilmPrintUS