



A4 Color Printer

ApeosPrint C4030 / C3530

 **ApeosPrint™**



Hello to the future of work

The “Apeos” series offers advanced features with high security level and easy operability to help business diversify with times.



Color A4

ApeosPrint C4030: 42 ppm (Letter), 40 ppm (A4)

ApeosPrint C3530: 37 ppm (Letter), 35 ppm (A4)



USB, Ethernet, Wi-Fi* connectivity

*Optional

Superb Printing Quality

- Print resolution up to 1,200 x 2,400 dpi
- Super EA-Eco toner for fine text and fine lines
- Rich color expression with LED printhead and IReCT*

* Image Registration Control Technology

Fast output with no wait time

Quick startup and output for greater efficiency

- Print up to 40 ppm(C4030) / 35ppm(C3530) on A4 Size
- Automatic 2-sided printing
- Machine life up to 300,000 pages

Reducing environmental impact

- Toner save function in increments of 1%
- Super EA-Eco toner: Fusing achieved at a low temperature contributes to low power consumption
- Functions contributing to paper consumption reduction
 - Private Charge Print, Pages per Side/ Multiple-Up, 2-Sided Print* etc.

* All the print drivers provided by FUJIFILM Business Innovation Corp. are default to 2-Sided Printing setting at installation.

Flexible. Secure. Reliable

Supports flexible work style

Supports Wireless LAN environment*.

- Being wireless-enabled, device can be installed anywhere in your office
- Up to five Wi-Fi Direct devices can be connected at the same time
- You can easily print from mobile devices using Print Utility, AirPrint, and Mopria® Print Service

* Optional

Supporting Universal Print by Microsoft*¹

By registering ApeosPrint C4030 series to Universal Print by Microsoft in advance, users*² authenticated with Microsoft Entra ID*³ can print from anywhere through cloud.

*1: Optional Storage (SSD) is required.

*2: Organizations with Microsoft Windows Enterprise or Microsoft 365 subscriptions.

*3: Formerly Azure Active Directory.

Safeguard Important Information

- Prevents paper information leakage with Secure Print and Private Charge Print with IC card authentication*.
- Newly support WPA3 as latest wireless LAN security protocol and adopt TPM (Trusted Platform Module) 2.0, as a security chip that conforms to the latest standards with enhanced encryption.
- Detects tampering of device software and self-repairing feature protects and repairs device software against tampering events.
- Provides more robust and secured office environment with enhanced security feature of both hardware and software.

* Optional

Reliable support system

From consumables replacement to unexpected device failures, most problems can be resolved without waiting for the service or sales representatives.

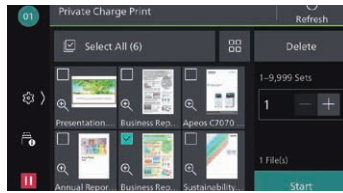
- Resolve problem using the “Help” function on the device



ApeosPrint C4030 series, catering to your everyday business printing needs

User-friendly color touch panel

- Home screen personalization for ease of access to commonly used functions
- When using Private Charge Print, you can easily select and delete the documents viewing the thumbnails* shown on the panel.



* Optional Storage (SSD) is required for thumbnail view.

Quick printing from your mobile device and USB flash drive

- You can print photos and documents (PDF) stored in your iOS or Android mobile device.
- Connect to Machine via Wireless Environment or Wi-Fi Direct Connection*
- You can easily print from mobile devices using Print Utility, AirPrint, and Mopria® Print Service.
- You can directly print the documents stored on a USB flash drive for efficient operations

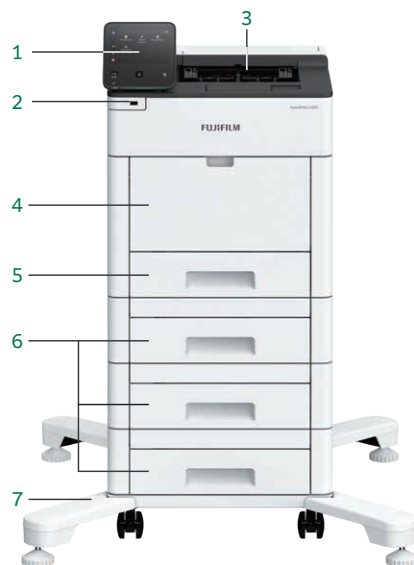
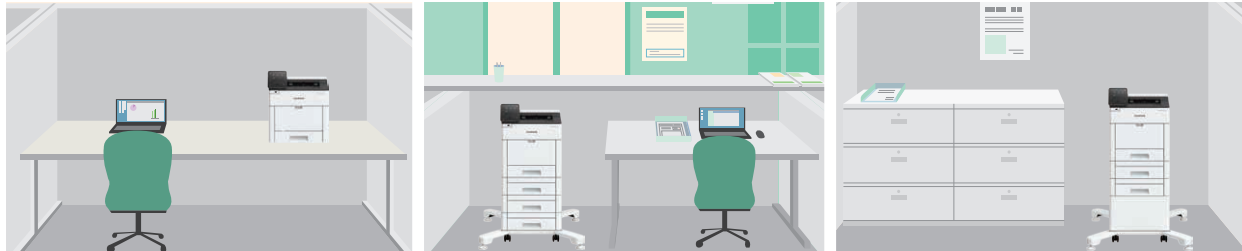


Print from mobile devices

* Optional

Smart & scalable

ApeosPrint C4030 series can be installed just the way you like. As a desktop device, under a counter, or a console central printer.



- 1. 5-inch color touch panel:**
Intuitive color touch panel lets you find just what you want at a glance
- 2. USB port:**
Use your own USB flash drive to print directly
- 3. Output tray:**
Capacity is 250 sheets
- 4. Bypass Tray (150 sheets):**
Supports various paper types such as envelopes and postcards
- 5. Standard Tray (550 sheets):**
For standard users. Supports various types & sizes of paper
- 6. 550-Sheet Feeder* (550 sheets):**
Paper feeding capacity is 2,350 sheets at maximum. High scalability for high-volume printing needs
- 7. Caster*:**
For easy installation and moving on the floor
- 8. Cabinet*:**
Convenient for storing paper and consumables
- 9. IC Card Reader*:**
You can use Private Charge Print with your IC card

* Optional



From printing on envelopes and thick paper to producing promotional materials

- Automatic adjustment of pressure to print envelopes
- A smooth paper feed path so that thick paper can run stably
- Supports long paper up to 215.9 x 520 mm*

* Long Papers are fed from Bypass Tray.



ApeosPrint C4030 / C3530

Functions & Specifications

Items		Description	
		ApeosPrint C4030	ApeosPrint C3530
Printing Method		LED Electrophotography	
Warm-up Time		38 seconds or less (23 degrees Celsius room temperature). 20 seconds or less from Sleep Mode.	
Continuous Print Speed*1	Simplex	42 ppm (Letter), 40 ppm (A4)	37 ppm (Letter), 35 ppm (A4)
	Duplex	28 ppm (Letter) / 27 ppm (A4)	24 ppm (Letter) / 23 ppm (A4)
First Print Output Time*2		Color: 5.3 seconds (Letter / A4), B/W: 5.1 seconds (Letter / A4)	
Printing Resolution	Standard	[PCL Driver] Standard: 1,200 x 2,400 dpi, High Quality: 1,200 x 2,400 dpi, High Resolution: 1,200 x 1,200 dpi	
	Optional	[Adobe® PostScript® 3™ Driver] High Speed (Standard): 600 x 600 dpi, High Quality: 1,200 x 2,400 dpi, High Resolution: 1,200 x 1,200 dpi	
Paper Size	Standard Tray	A6*3, JIS B6*3, A5, JIS B5, ISO B5, A4, Statement (139.7 x 215.9 mm), Executive (184 x 267 mm), Letter, 8.5 x 13" (215.9 x 330.2 mm), Legal, Custom Size (Width: 76.2 to 215.9 mm, Length*4: 190.5 to 355.6 mm)	
	Bypass Tray	A6, JIS B6, A5, JIS B5, ISO B5, A4, Statement (139.7 x 215.9 mm), Executive (184 x 267 mm), Letter, 8.5 x 13" (215.9 x 330.2 mm), Legal, COM-10, Monarch, DL, C5, Custom Size (Width: 64 to 215.9 mm, Length: 127 to 520 mm)	
	Optional Tray	550-Sheet Feeder: A5, JIS B5, ISO B5, A4, Statement (139.7 x 215.9 mm), Executive (184 x 267 mm), Letter, 8.5 x 13" (215.9 x 330.2 mm), Legal, Custom Size (Width: 76.2 to 215.9 mm, Length: 190.5 to 355.6 mm)	
	2 Sided Printing	A4, JIS B5, A5, Letter, 8.5 x 13" (215.9 x 330.2 mm), Legal, Executive (184 x 267 mm), Custom Size (Width: 139.7 to 215.9 mm, Length: 203.2 to 355.6 mm)	
Paper Weight*5	Standard Tray	60 to 220 gsm / 16 lb. bond to 122 lb. index	
	Bypass Tray	60 to 220 gsm / 16 lb. bond to 122 lb. index	
	Optional Tray	550-Sheet Feeder: 60 to 220 gsm / 16 lb. bond to 122 lb. index	
	2 Sided Printing	60 to 176 gsm / 16 lb. bond to 46 lb. bond	
Paper Tray Capacity*6	Standard	Standard Tray: 550 sheets, Bypass Tray: 150 sheets	
	Optional	550-Sheet Feeder: 550 sheets	
	Max	2,350 sheets [Standard + 550-Sheet Feeder x 3]	
Output Tray Capacity*6		250 sheets (Face down)	
CPU		ARM Dual Core 1.3 GHz	
Memory Capacity		4 GB (Max: 4 GB)	
Storage Device Capacity*7		3.6 GB, Optional: 82 GB*8	
Page Description Language	Standard	PCL5 / PCL6	
	Optional	Adobe® PostScript® 3™	
Supported Operating System*9	Standard	[PCL Driver] Windows 11 (64 bit) / Windows 10 (32 bit / 64 bit) / Windows Server 2022 (64 bit) / Windows Server 2019 (64 bit) / Windows Server 2016 (64 bit)	
		[Mac OS X Driver] macOS 14 / 13 / 12 / 11 / 10.15	
	Optional	[Adobe® PostScript® 3™ Driver] Windows 11 (64 bit) / Windows 10 (32 bit / 64 bit) / Windows Server 2022 (64 bit) / Windows Server 2019 (64 bit) / Windows Server 2016 (64 bit)	
		macOS 14 / 13 / 12 / 11 / 10.15	
Interface	Standard	Ethernet 1000BASE-T / 100BASE-TX / 10BASE-T, USB3.0	
	Optional	Wireless LAN (IEEE 802.11a / b / g / n / ac)	
Network Protocol		TCP/IP (Ipd, IPP, Port9100)	
Power Supply*10		AC110-127 V +/- 10%, 12 A, 50/60 Hz	
Operating Noise*11*12		In Operation: 6.9 B, 53 dB (A) Ready Mode: 4.8 B, 33 dB (A)	
Maximum Power Consumption	Max	1,200 W (AC110 V +/- 10%), 1,460 W (AC127 V +/- 10%)	
	Average	Ready Mode: 70 W	Ready Mode: 70 W
		In Operation: 692 W	In Operation: 674 W
		Sleep Mode: 0.4 W	Sleep Mode: 0.4 W
Dimensions		W 427.4 x D 465.5 x H 407.5 mm / W 16.9 x D 18.4 x H 16.1"	
Weight		28.0 kg / 62 lb. (Including consumables and drum) 24.0 kg / 53 lb. (Excluding consumables and drum)	

Note: Custom Paper Size setting may be required depending on the paper size.

*1: When Continuously Printing Original in Letter / A4 (Plain). The performance may be reduced depending on the paper type and the paper size. The speed may be reduced due to the image quality adjustment.

*2: When feeding from feeder tray of machine. Numeric value varies depending on output environment.

*3: When using A6 / JIS B6 paper with the Standard Tray, the optional A5 LEF / A6 Tray Guide is required.

*4: When the optional A5 LEF / A6 Tray Guide is attached, the length is 148 to 190.5 mm.

*5: It is recommended to use our recommended paper. Correct print output may not be possible depending on the requirement.

*6: 80 gsm paper.

*7: The Storage Device Capacity is not totally available for customers.

*8: When the optional Storage (SSD) is installed.

*9: Please refer to our official website for the latest supported OS.

*10: Power outlets that provide the above power level is recommended. Maximum machine measured current: 8 A.

*11: Measured in accordance to ISO7779. Unit B: Sound Power Level LWAd. Unit dB: Radiated Sound Pressure Level LpAm (bystander position), as reference value.

*12: Main unit only.

Consumables

Product Name	Product Life
Drum Cartridge Black (Starter)	Up to 60,000 pages*1
Drum Cartridge Cyan (Starter)	Up to 60,000 pages*1
Drum Cartridge Magenta (Starter)	Up to 60,000 pages*1
Drum Cartridge Yellow (Starter)	Up to 60,000 pages*1
Drum Cartridge Black	Up to 60,000 pages*1
Drum Cartridge Cyan	Up to 60,000 pages*1
Drum Cartridge Magenta	Up to 60,000 pages*1
Drum Cartridge Yellow	Up to 60,000 pages*1
Toner Cartridge Black (Starter)	Up to 7,000 pages*2
Toner Cartridge Cyan (Starter)	Up to 5,000 pages*2
Toner Cartridge Magenta (Starter)	Up to 5,000 pages*2
Toner Cartridge Yellow (Starter)	Up to 5,000 pages*2
Toner Cartridge Standard Black	Up to 7,000 pages*2
Toner Cartridge Standard Cyan	Up to 5,000 pages*2
Toner Cartridge Standard Magenta	Up to 5,000 pages*2
Toner Cartridge Standard Yellow	Up to 5,000 pages*2
Toner Cartridge High-capacity Black	Up to 15,000 pages*2
Toner Cartridge High-capacity Cyan	Up to 11,000 pages*2
Toner Cartridge High-capacity Magenta	Up to 11,000 pages*2
Toner Cartridge High-capacity Yellow	Up to 11,000 pages*2
Fusing unit 110v	Up to 100,000 pages
Transfer Module	Up to 100,000 pages
Waste Toner Container	Up to 30,000 pages*3
Paper Roller Kit	Up to 100,000 pages

*1: The number of printable pages is a reference value derived from the average of 3 sheets printed in A4, 1 sided, image coverage per color 5 %, Color/Monochrome rate 50 : 50 in one setting, under continuous printing usage conditions. The actual number of printable pages may vary to below half the reference value, depending on paper type, paper direction, input/output tray settings, initialization operations upon powering ON/OFF the device, tuning operations to maintain print quality, and other such usage environment conditions.

*2: Published value based on ISO/IEC 19798 standards. The actual number of printable pages may vary significantly from the published value, depending on printing content, paper size, paper type, usage conditions, initialization operations upon powering ON/OFF the device, tuning operations to maintain print quality, and other such usage environment conditions.

*3: The number of printable pages is a reference value when printing in A4, 1 sided, image coverage per color 5 %, Color/Monochrome rate 50 : 50. The actual number of printable pages may vary significantly from the reference value, depending on printing content, paper size, paper type, usage conditions, initialization operations upon powering ON/OFF the device, tuning operations to maintain print quality, and other such usage environment conditions.

Notes

- To comply with paper weight specifications, it is recommended to use our recommended paper. Document may not be printed correctly depending on usage conditions.
- Functional spare parts will be available for at least 7 years after the product is no longer manufactured.

FUJIFILM

FUJIFILM Business Innovation Corp.
Headquarters

9-7-3, Akasaka Minato-ku, Tokyo 107-0052

TEL: +81-3-6271-5111

fujifilm.com/fbglobal

The available model varies depending on the country/region. Please ask the sales representatives for details.

The product specifications, appearance and other details in this brochure are subject to change without notice for improvements.

Reproduction Prohibitions Please note that reproduction of the following is prohibited by law : •Domestic and foreign currencies, government-issued securities, and national bonds and local bond certificates. •Unused postage stamps, post cards, etc. •Certificate stamps stipulated by law. •Reproducing works forming the subject matter of copyright (literary works, musical works, paintings, engravings, maps, cinematographic works, drawings, photographic works, etc.) is not permitted unless the reproduction is for the purpose of personal use, family use or other similar uses within a limited circle.

Trademarks •FUJIFILM and FUJIFILM logo are registered trademarks or trademarks of FUJIFILM Corporation. •ApeosPrint and DocuWorks are registered trademarks or trademarks of FUJIFILM Business Innovation Corp. •Adobe, Adobe logo, PostScript and PostScript logo are either registered trademarks or trademarks of Adobe in the United States and/or other countries. •Mopria the Mopria Logo, and the Mopria Alliance word mark and logo are registered and/or unregistered trademarks and service marks of Mopria Alliance, Inc. in the United States and other countries. •Apple, AirPrint and Mac are trademarks of Apple Inc. registered in the U.S. and other countries and regions. •All product names and company names mentioned in this brochure are trademarks or registered trademarks of their respective companies.



For Your Safety

Before using the product, read the Instruction Manual carefully for proper use. Use the product with the power source and voltage specified. Be sure to establish ground connection. Otherwise, electronic shock may result in the case of a failure or short circuit.

