



# Revoria Press™ SC285S / SC285

Product Brochure



# Elevate your creativity

Experience the cutting-edge potential of expandable color within a compact design, paving the way for new printing possibilities. Uncover rich functionality and seamless operability that bring endless ideas to life.

### Creativity

Unlock advanced production print capabilities with a compact, space-saving design. Enjoy exceptional CMYK+ printing quality with Super EA-Eco toner and the dazzling brilliance of metallic colors, effortlessly expanding your printing possibilities.

### Productivity

Boost your business with exceptional productivity and professional print quality. Our print server options offer superior quality, productivity, and reliability for every task.

### Flexibility

With an intuitive interface, flexible paper handling and advanced finishing options, you can transform ideas into tangible results and seize new business opportunities.

### Automation

Leverage automation to deliver consistent print quality and operational efficiency to revolutionize your business. Tackle complex tasks that once needed specialized skills, and chart a path toward sustainable growth

### Usability

Beyond stunning printed materials, enjoy a comprehensive suite of office-ready copy and scan functions, tailored to boost your business's quality and efficiency.



\*SC285S shown with optional accessories.



Wide color gamut

Metallic inks

Skin tones

# Differentiate your business with added value print

The Revoria Press SC285S allows you to provide higher quality, added value print by utilizing specialty toners as a fifth color, together with CMYK. These specialty toners can be printed as an overlay to CMYK and can all be easily and quickly replaced by the user.

### Pink toner

The pink toner in the Revoria Press SC285S expands the color gamut of your print, allowing you to achieve colors closer to RGB. It also improves the printing of skin tones.

### White toner\*

The ability of the Revoria Press SC285S to print high opacity white is essential for window clings, labels and other transparent media and opens up a world of possibilities on darker paper and board.

### Metallic toners\*

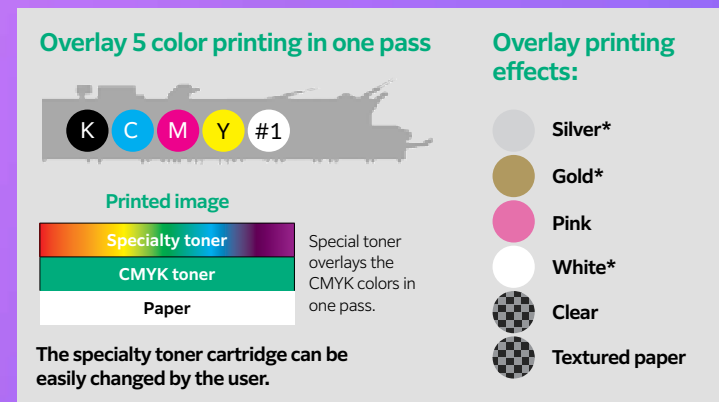
The ability to print with gold and silver metallic toners can bring extra dazzle, depth and visual appeal to your projects - making them truly memorable.

### Clear toner

A clear toner allows you to highlight names, headlines and areas of print with a perfectly registered varnish-like effect, to add an extra dimension to produce creative, personalized print. It can also add a touch of luxury to subtle patterns and backgrounds too.

### Textured paper toner

The Revoria Press SC285S / SC285 print superbly on many textured papers. The textured paper toner improves the transfer of the color toner onto the concave areas of particularly challenging textured paper, improving print quality, and expanding the types of paper and applications that can be printed.



\*Gold, silver and white toners are in development and their availability will be announced in the future.

# Best in class toner technologies

## Super EA-Eco toner

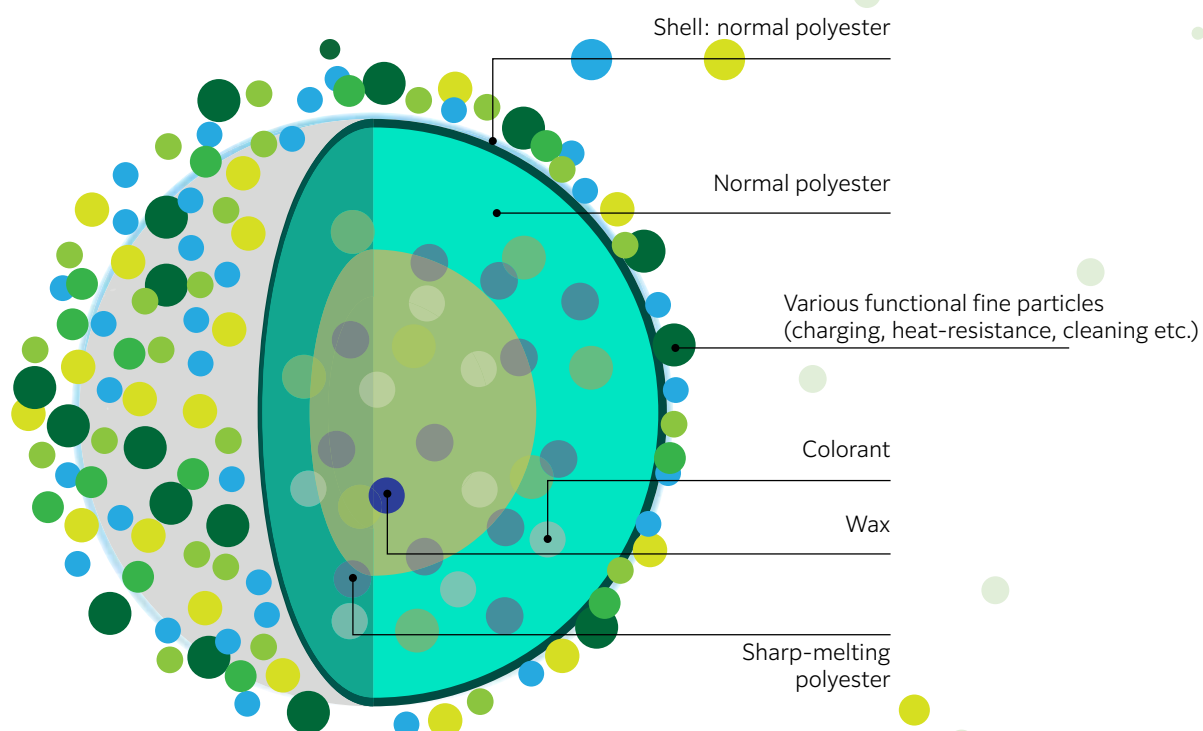
With Super EA-Eco toner, particle sizes have been reduced to among the smallest in the industry, with the toner particle shape standardized to enable the super-sharp rendering of detailed characters and fine lines.

## LED printhead

The Revoria Press SC285S / SC285 benefit from a high-resolution 2400 x 2400 dpi LED print head, which produces incredible, high-definition print output for sharp lines and images.

## Outstanding image quality

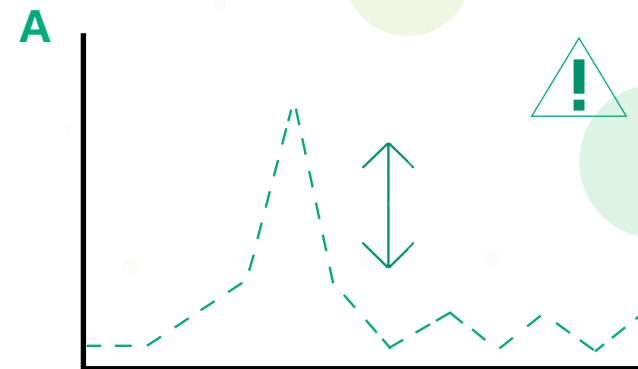
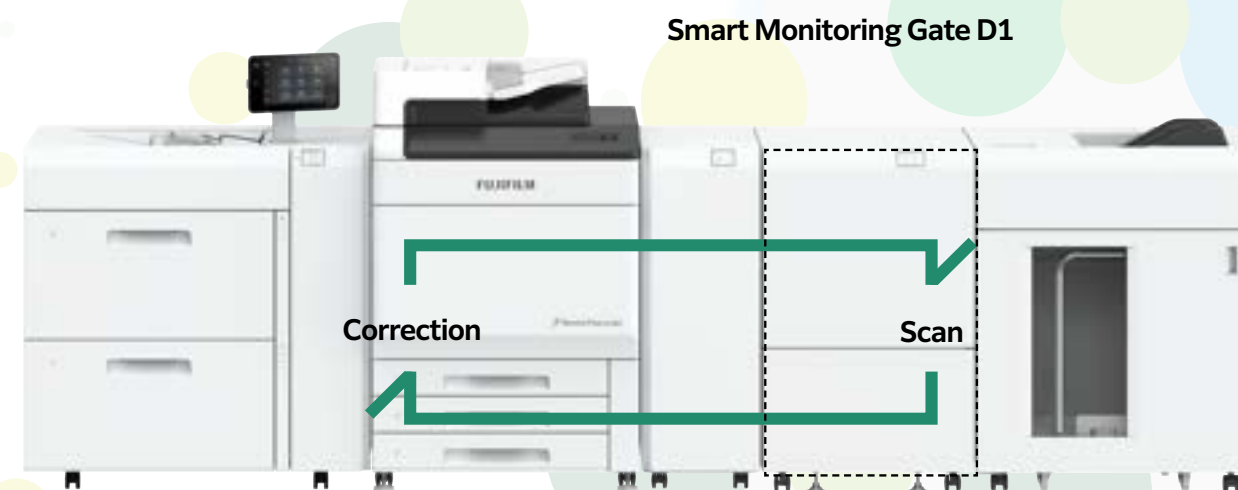
10 bit depth provides 4 times more greyscales (1024 against 256 greyscales) than other printers in the market. In combination with Super EA Eco toner, the Revoria Press SC285S / SC285 produce outstanding fine detail, color transitions, greyscale and skin tones.



## Smart stabilizer

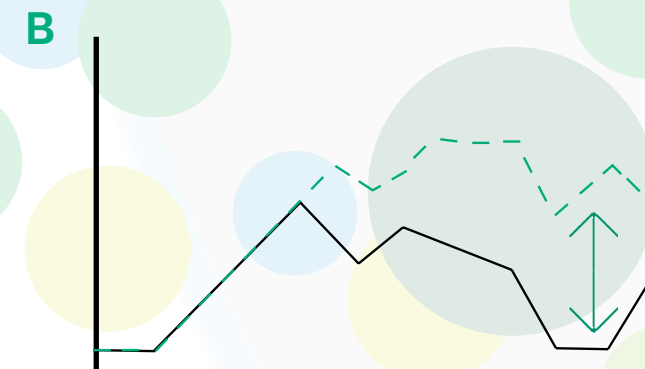
By scanning the print jobs, the system detects and automatically corrects color density variations and misalignments in real time.

The Revoria Press SC285S / SC285 incorporate an optional Smart Monitoring Gate D1 which monitors the color density and front to back registration of print jobs as they are being printed.



### A) Change in color density or registration

The D1 Smart Monitoring Gate intelligently monitors changes in color density and registration alignment.



### B) Real time adjustments

Adjustments are made while the job is printing based on the average change in value over the previous 10 pages.

# Boost your business

Exceptional productivity and professional print quality for every task.

### Top-speed printing of 85 ppm with all paper weights

The Revoria Press SC285S / SC285 are capable of printing up to 85 ppm A4 CMYK, and up to 47 ppm for A3 CMYK. This speed is achieved for all media weights of between 52gsm and 400gsm.

### High resolution, highly productive print server

1,200 x 1,200 dpi RIP processing reproduces images with their original vivid quality. Even fine text and lines can be reproduced at 1,200 dpi resolution. High-precision 3D calibration and feedback functions ensure consistent color reproduction. Different-sized data can be imposed at any desired position for more efficient use of banner sheets and reduced paper waste.

### Calibration for G7® standard\*

G7® calibration achieves consistent gray balance and neutral tonality across different printing processes, substrates, and printing conditions. A standard that is widely adopted in the printing industry to ensure color consistency and quality across various printing technologies and platforms.

Note: G7® is Idealliance's global industry-leading set of specifications for achieving visual similarity across all print processes.

\*G7® certified the combination with Revoria Flow Print Servers.



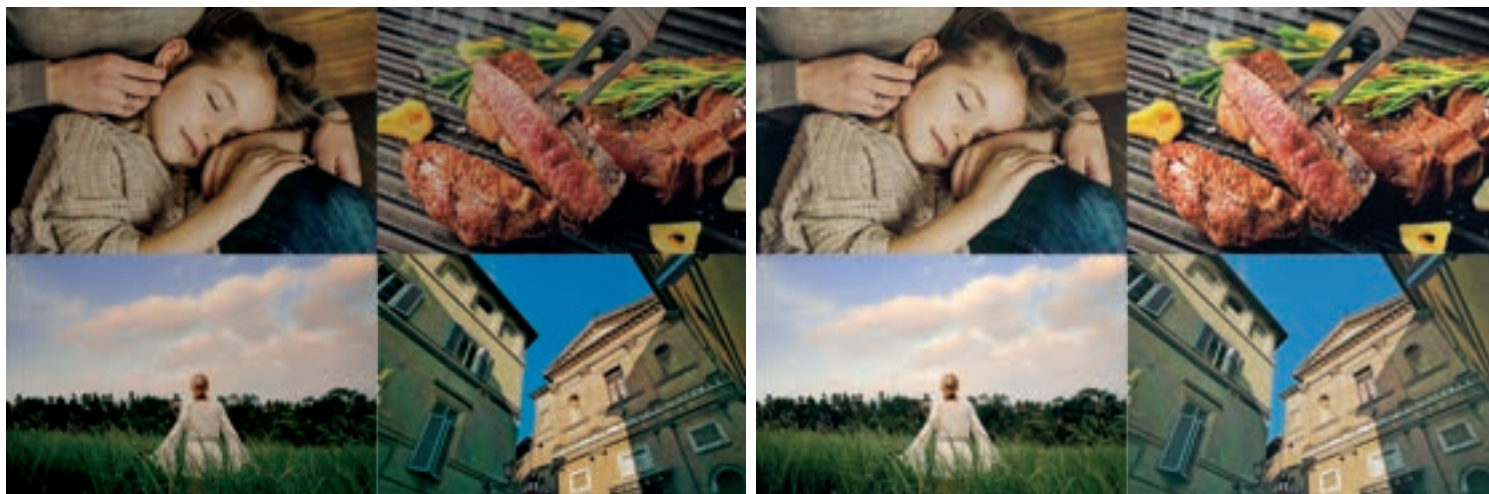
\*SC285S shown with optional accessories.

# Revoria Flow

Fujifilm's Revoria Flow is a next generation Digital Front End (DFE) combining workflow functionality and Fujifilm's advanced imaging know-how in one all-inclusive package. It has been designed to optimize the advanced features incorporated into the Revoria Press™ SC285S / SC285.

## AI-based photo quality optimization

AI (Artificial Intelligence) automatically detects the type of image within a print job and optimizes print quality settings depending on the image, automatically improving things like skin tones, brightness and sharpness to achieve the best printed output.



### Portrait

- Correct skin tones
- Brightness

### Landscape

- Noise reduction
- Correct sky color

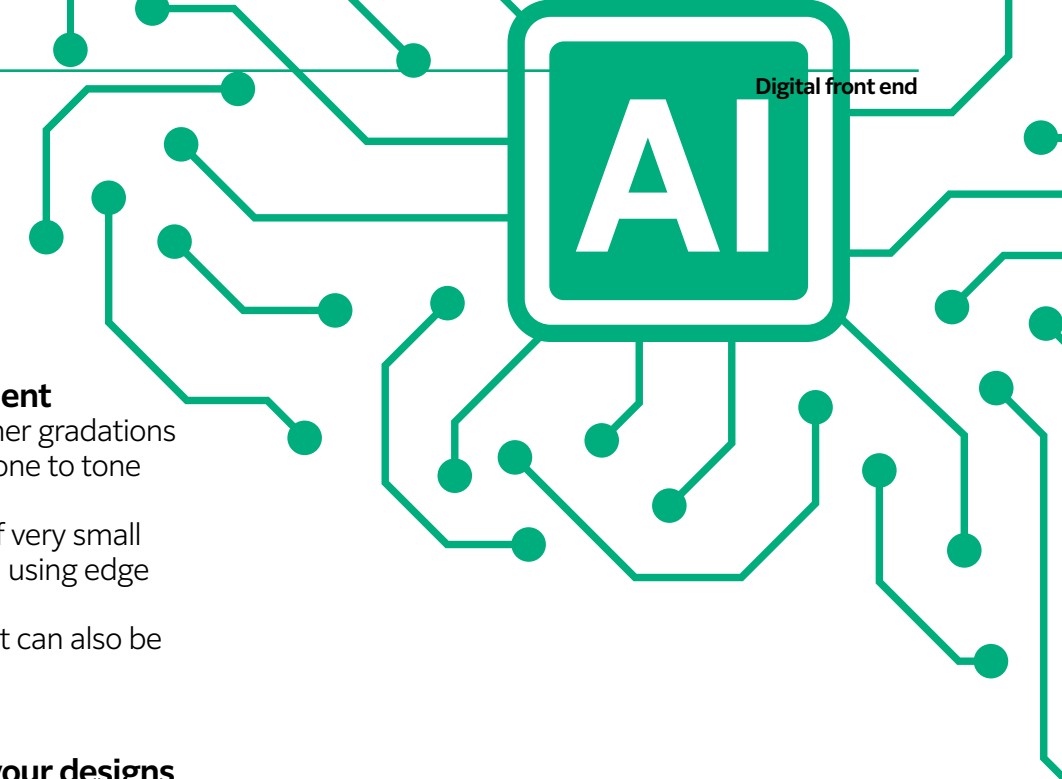
### Indoor

- Brightness
- Texture correction

### Outdoor

- Backlight compensation
- Sharpness

\*Comparative image depictions in these materials are simulated and provided as a general reference only. Actual differences with the referenced FUJIFILM Revoria Press SC285S / SC285 product may vary, based on conditions of use. Actual print samples available for direct comparison upon request.



## Automatic image quality adjustment

- Gradation correction: even smoother gradations can be achieved in jobs that are prone to tone jumps.
- Edge enhancement: the printing of very small text and fine lines can be improved using edge enhancement.
- Bold text: the definition of bold text can also be improved.

## Use metallics and pinks easily in your designs

Revoria Flow has special color libraries built in to make it easier to reproduce customer-specific colors. It also has a built in color palette so that metallic colors are readily available. By downloading the Pantone™ swatch library, you can specify gold, silver and pink easily in Adobe® Illustrator®, InDesign®, and Photoshop®, and pink can be used to reproduce color swatches of spot colors.

## Color matching previous print jobs

Revoria Flow incorporates a feature called User Image Color Matching (UICM) which can be used to match the colors of a previous print job - even if it was printed on another press. This applies even if you do not know the previous print settings or output conditions, allowing you to reprint jobs that are a color match.

# Fiery SC21 & SC22C

**Optional Fiery SC21 & SC22C servers can be used to power the Revoria Press SC285S / SC285 printers for smart automation and perfect color precision.**

Equipped with the cutting-edge Fiery FS600 Pro software, these servers are engineered to take your efficiency and print quality to its maximum. In addition, job management can be streamlined with Fiery Command WorkStation, which offers production teams robust tools to manage jobs across Fiery-driven printers efficiently.

They also feature the Fiery Print Scheduler - a system that enables job scheduling via a visual interface, optimizing production schedules, machine availability, and customer delivery timelines.



**Fiery SC21**  
\*stand alone



**Fiery SC22C**  
\*integrated

# Revoria XMF PressReady

## Advanced digital workflow

Fujifilm's Revoria XMF PressReady is a revolutionary digital print production workflow system to receive, pre-flight, impose, gang, sort and deliver "Press Ready" jobs to digital presses using automated production flows. It allows print service providers to automate ordinary and repetitive tasks, allowing press operators to focus on more important aspects of the production process.

## Conditional automation

Able to integrate seamlessly into a range of established workflow environments, XMF PressReady offers multiple workflows that can be configured to make production decisions based on size, quantity, media, and page count. XMF PressReady eliminates the need for manual intervention, saving valuable time and reducing the possibility of operator error.

## Hybrid digital & offset print production

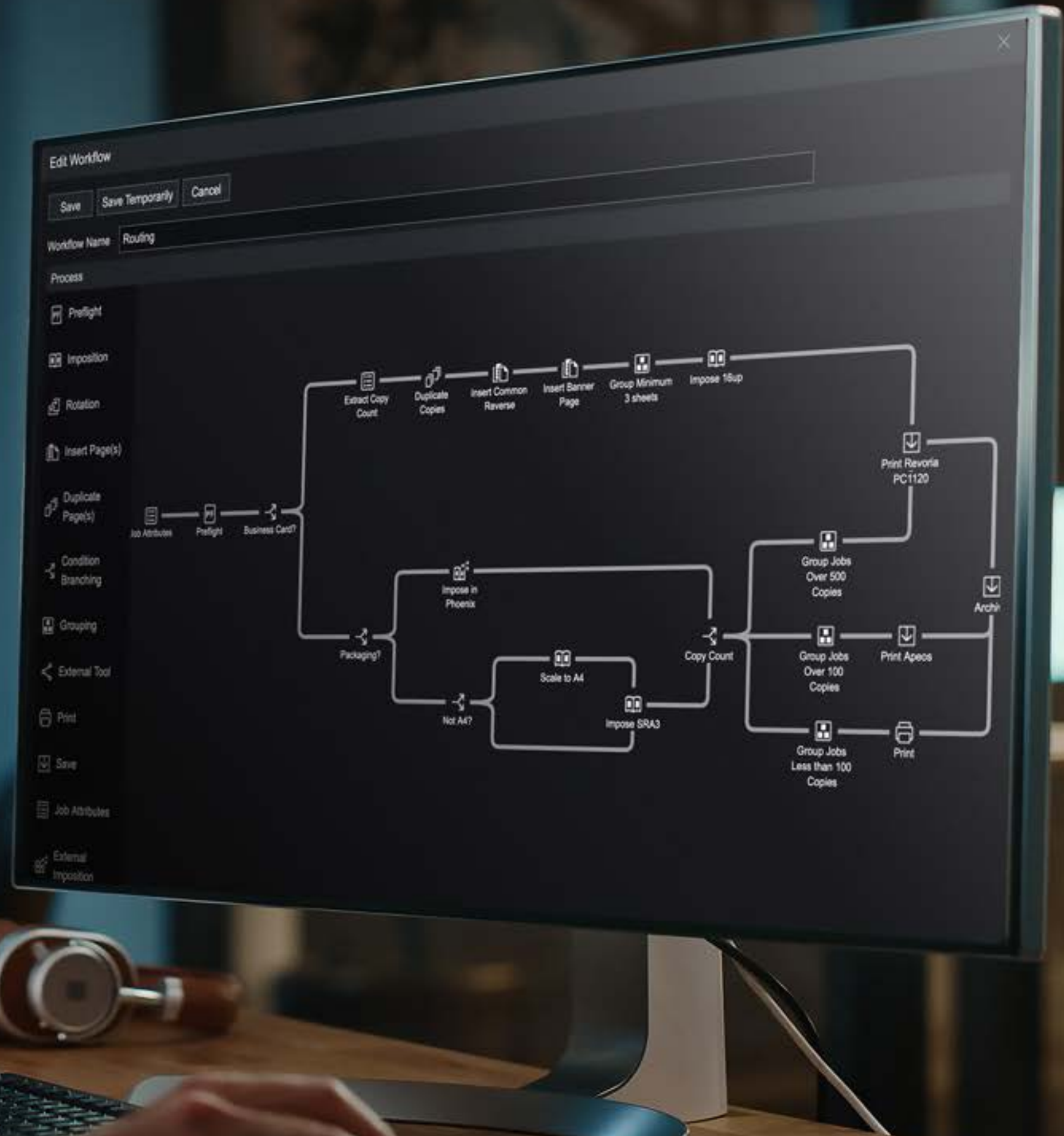
XMF PressReady is integrated with Fujifilm's established and respected XMF Workflow system, allowing print businesses to manage both offset and digital production via one integrated workflow, making it an ideal solution for those who offer hybrid printing services. When used in combination with Fujifilm's Revoria Press and Revoria Flow DFE, XMF PressReady, can completely automate the flow of print work from order intake to printed product by preconfiguring and automating the flow of work through the Revoria Flow DFE.

## Print management across all vendor presses

XMF PressReady is unique in integrating not only with Revoria digital presses, but any connected digital press using a Fiery DFE. This allows print service providers to manage digital presses from multiple vendors using one system, giving visibility of the print job status, the print job queue, media information, ink levels and much more.

## Streamline production

Fujifilm's XMF PressReady brings a new level of efficiency to digital print production, providing print service providers with a powerful, flexible, and efficient workflow system that can automate processes, streamline production, and save valuable time by minimising errors.



# Paper handling capabilities

A range of industry leading, advanced technologies have been introduced in the Revoria Press SC285S / SC285 that have improved paper handling capabilities, extending the variety of applications that can be produced across a variety of substrates.

## Thick paper, envelopes

Two new paper transfer technologies result in industry-leading paper handling capabilities for thick paper and envelopes:

- New secondary transfer load switching mechanism changes the pressure to hold the paper according to the paper thickness.
- New transfer torque variable mechanism stabilizes the paper feed.

Both these new technologies mean thick paper and envelopes can be printed wrinkle-free consistently.

## Embossed paper, rough paper, thick paper

The newly developed Advanced Single Layer Belt (A-SLB), secondary transfer load switching mechanism, and toner condition stabilization technology, have greatly improved the transfer of toner to embossed and thick paper.

## Thin paper

The use of a belt-type transfer device, rather than roll-type, improves the versatility of printing on thin paper.

## Print paper sizes from a minimum of 3.6 x 5.8 in. to a maximum of 12.9 x 51.1 in. (single sided)

From 3.6 in. wide envelopes to 12.9 x 51.1 in. wide posters and vertical calendars, you can expand the number of applications you can print.



# Additional paper handling technologies

## Static eliminator

The optional Static Eliminator D1 provides a remarkable static elimination effect on a wide range of media, including single-layer film, synthetic paper, water-resistant paper, and tack paper.

## Curl correction

A compact, built-in decurler judges and automatically corrects the paper curl caused by the type of paper or the image density, one page at a time in real time. High quality output with stable paper travel and curl suppression is possible.

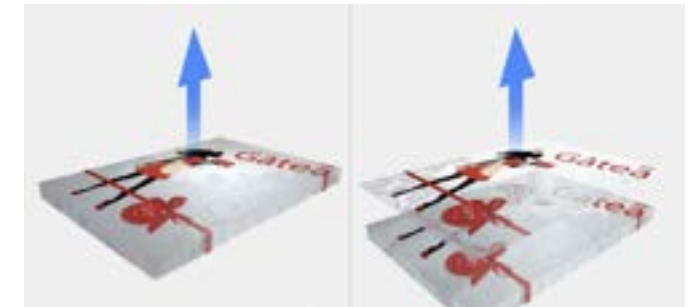
The optional Interface Decurler Module D1 offers easy additional curl correction steps, saving the time required for curl adjustments where the printing media is changing frequently.

## Air suction feeder

The optional Air Suction Feeder improves the feed performance of paper with a lot of paper dust, pre-printed paper using powder, paper with an uneven texture, and coated paper.

Stable and high-speed feed is achieved for various paper types, from lightweight to heavyweight, small-sized paper and banner sheet.

Shuttle head draws up the paper strongly using a small amount of air, it easily separates and delivers each sheet efficiently.



Static eliminator: OFF

Static eliminator: ON



Side blower: air is blown from both sides to separate the paper



# Flexible post processing options

The Revoria Press SC285S and SC285 incorporate various post-processing options inline to maximize productivity. They also support safe and more sustainable needless staples.

### Full-bleed trim

- Cut three sides of the booklet: top, bottom and edge
- Image-rich design with full registration marks

\*"Crease/ Two-sided trimmer D2" and "Small trimmer folder D1" are required.

### Crease

- Highly flexible folding bars for cardboard (mountain fold / valley fold, max. 5pcs)
- Toner back crack-free finish

\*"Crease/ Two-sided trimmer D2" is required.

### Cover insertion

- Highly flexible cover (supports oversized A3)
- Toner back crack-free finish

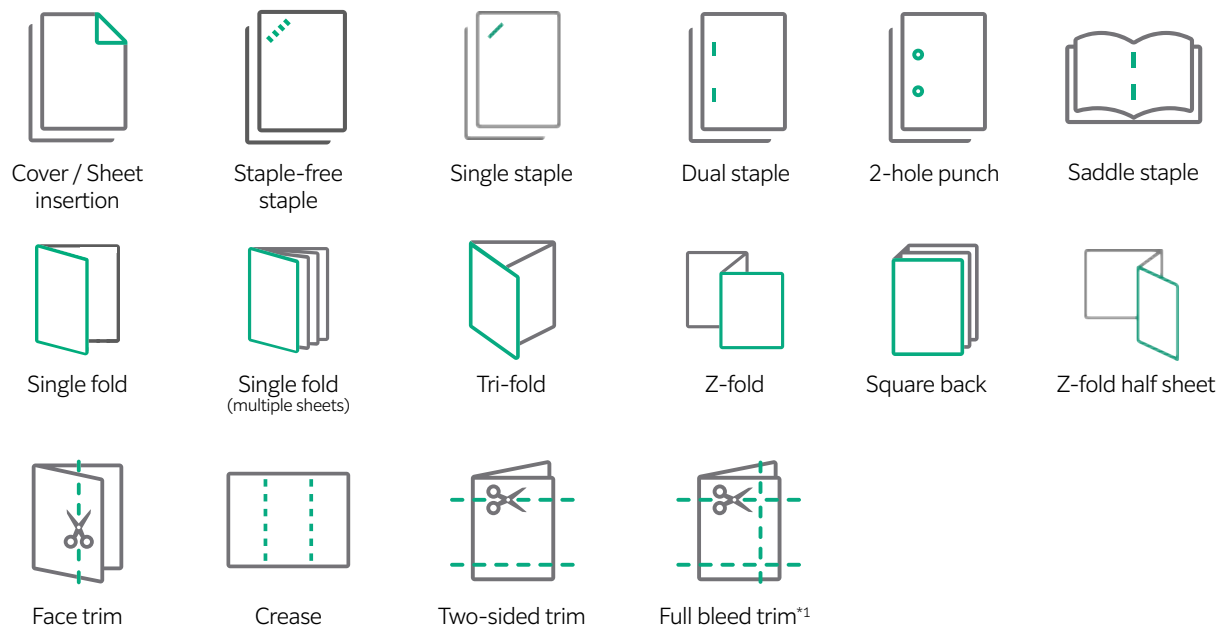
\*"Crease/ Two-sided trimmer D2" is required.



Square Back

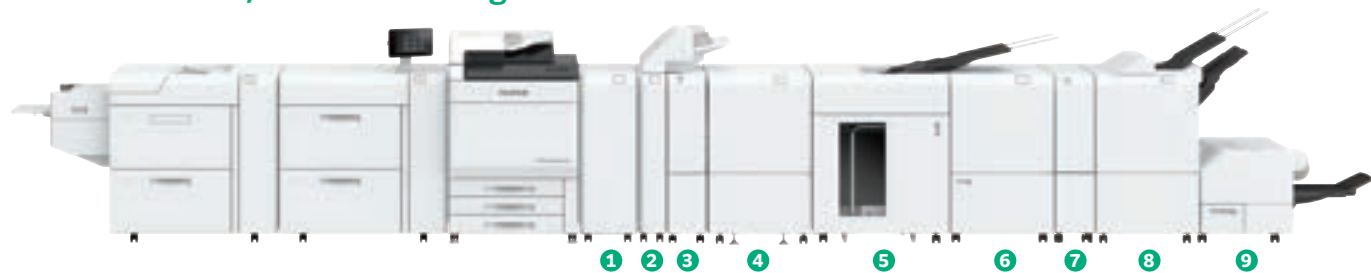


Crease



\*Full bleed trim is performed for Two-sided trim and Face trim.

Revoria Press SC285S / SC285 Full Configuration



Full Configuration 316.38 x 33.78 x 49.29 in.\* (L x W x H)\*  
 \*Actual dimensions may vary with optional third-party equipment.

\* Extension Kit and Extension Kit Extra are not included in height.

Feeding options



High Capacity Feeder C3-DS  
 + Multi Sheet Inserter for Banner Print  
 • Air assist • Multi-feed detection  
 2,100 sheets x 2 trays + 250 sheets  
 Maximum SRA3, 12.9 x 25.9 in.



2nd High Capacity Feeder C1-DS  
 + High Capacity Feeder C3-DS  
 + Multi Sheet Inserter for Banner Print  
 • Air assist • Multi-feed detection  
 2,100 sheets x 4 trays + 250 sheets  
 Maximum SRA3, 12.9 x 25.9 in.



Air Suction Feeder C1-DS\*1  
 • Air suction  
 • Multi-feed detection  
 2,200 sheets x 2 trays + 250 sheets  
 Maximum SRA3, 12.9 x 25.9 in.



Chained Air Suction Feeder C1-DS-L\*1  
 + Chained Air Suction Feeder C1-DS-R  
 • Air suction • Multi-feed detection  
 2,200 sheets x 2 trays + 250 sheets  
 Maximum SRA3, 12.9 x 25.9 in.



Air Suction Feeder C1-DSXL\*1  
 + Banner Unit for Air Suction Feeder C1-DSXL  
 • Air suction • Multi-feed detection  
 • Long sheet feeding  
 900 sheets + 2,200 sheets + 250 sheets  
 Maximum SRA3, 12.9 x 51.1 in. (Upper tray)



Chained Air Suction Feeder C1-DSXL-L\*1  
 + Chained Air Suction Feeder C1-DS-R  
 + Banner Unit for Air Suction Feeder C1-DSXL  
 • Air suction • Multi-feed detection  
 • Long sheet feeding

900 sheets + 2,200 sheets x 3 trays + 250 sheets  
 Maximum SRA3, 12.9 x 51.1 in. (Left Upper tray)



High Capacity Feeder B1\*2  
 • A4 Size  
 2,100 sheets x 1 tray  
 Maximum SRA4



High Capacity Feeder B1-S  
 + Multi Sheet Inserter for Banner Print  
 • A4 Size  
 2,100 sheets x 1 tray + 250 sheets  
 Maximum SRA3, 12.9 x 25.9 in.

Output options (shown above)

- 1 Interface Decurler Module D1  
• Real-time paper curl correction
- 2 Inserter D1  
• Cover / sheet insertion
- 3 Static Eliminator D1  
• Eliminates static electricity
- 4 Smart Monitoring Gate D1  
• Print inspection
- 5 High Capacity Stacker A1  
• 5000-sheet offset-stacking  
• Stacker cart  
• Long Sheet Output\*1
- 6 Crease / Two-sided Trimmer D2  
• Two-sided trim  
• Crease
- 7 Folder Unit CD2  
• Z fold half sheet  
• Tri-fold
- 8 Finisher D6 with Booklet Maker  
• Sort / Stack  
• Stapling  
• Hole punch\*3  
• Single fold  
• Saddle Staple  
• Long sheet output
- 9 Square Back Fold Trimmer D1  
• Face trim  
• Square back

Additional output options

- Finisher-C5 / Finisher-C5 with Booklet Maker  
 • Sort / Stack  
 • Stapling  
 • Staple-free stapling  
 • Hole punch  
 • Saddle staple  
 • Single fold\*4
- Folder Unit CD3  
 • Z Fold half sheet  
 • Tri-fold
- Finisher D6  
 • Sort / Stack  
 • Stapling  
 • Hole punch\*3  
 • Long sheet output
- Offset Catch Tray  
 • Offset stack
- Long Catch Tray  
 • Long sheet output

\*1: Multi Sheet Inserter for Banner Print is equipped as standard.  
 \*2: Optional Multi Sheet Inserter for Banner Print is required separately. It is connected to printer directly.  
 \*3: Optional.  
 \*4: For FinisherC-5 with Booklet Maker

# Technical specifications

REVORIA PRESS SC285S / SC285	
Print Speed (Mono / 4C)	85 ppm (A4 (CMYK)) 47 ppm (A3 CMYK)
Toner technology	Super EA-Eco Toner
Number of colors	CMYK (SC285) CMYK+ 1 specialty color: Pink, Clear, Textured, or White (SC285S)
Print resolution	2400 x 2400 dpi
Paper handling (uncoated)	52 - 400 gsm
Paper handling (coated)	72 - 400 gsm
Paper size	3.6 x 5.8 in. - 12.9 x 51.1 in.

\*All values are targets and subject to change without notice. The name FUJIFILM and the FUJIFILM logo are trademarks of FUJIFILM Corporation. All other trademarks shown are trademarks of the owners. All rights reserved.



Adobe PDF Print Engine Adobe PostScript  
 G7 certified the combination with Revoria Flow Print Servers.

## A partner you can count on

Considering service and support should be a key part of your purchase decision.

### Manage devices more easily to up your ROI

On-board tools supported by proactive, predictive maintenance make it easier to maximize investments.

We help protect your investment with remote services, including smart, proactive monitoring that helps eliminate unplanned downtime.

Alerts are sent to our service experts so they can preempt performance issues with timely supplies and consumables delivery, remote troubleshooting or on-site support.





Find more information at:  
[print-us.fujifilm.com](http://print-us.fujifilm.com)



**FUJIFILM Graphic Communication Division**



**@FujifilmGCD**



**@FujifilmGCD**