

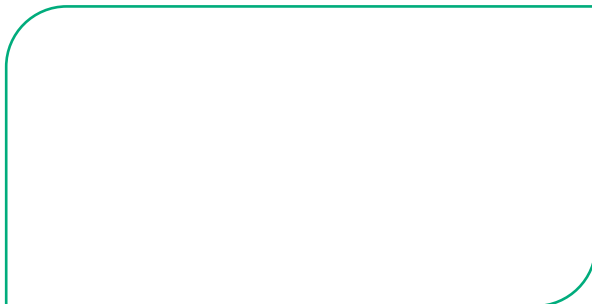


# J Press 1160CFG

Product Brochure



Find more information at:  
[print-us.fujifilm.com](http://print-us.fujifilm.com)



FUJIFILM Graphic Communication Division



@FujifilmGCD



@FujifilmGCD



# Setting new standards

## The J Press Series

With over 450 J Press series press installations worldwide and a growing range of presses, more and more printers and their customers are now realizing what can be achieved with J Press inkjet technologies.

The 4th generation J Press 750HS produces print quality that is better and more consistent than offset, truly setting a new standard in print quality.

The recent addition of the J Press FP790 to the J Press family, has brought Fujifilm's groundbreaking inkjet technologies to the flexible packaging market. The J Press FP790 has been designed to help print providers adapt to changing market dynamics that are driving shorter print runs and product life cycles, with an inkjet press that delivers industry-leading quality at speeds that compete with mainstream flexo production.

Now, Fujifilm has added a third machine to the J Press line up, the J Press 1160CFG, bringing the best inkjet technologies to commercial web applications, delivering high quality at high production speeds. The entrance of the J Press 1160CFG into the North American market builds on the success of continuous feed products sold by Fujifilm worldwide.



J Press 1160CFG

J Press FP790



J Press 750HS

# Stabilize your production

**J Press 1160CFG**



**One of the core innovations of the J Press 1160CFG is the Paper Stabilizer Technology, a feature that truly sets the J Press 1160CFG apart in the high-speed digital printing world.**

Traditionally, when printing with inkjet on coated papers, you need to apply a primer or pre-coating to ensure proper ink adhesion. However, with Fujifilm's Paper Stabilizer, you can print directly on coated papers without the need for a primer, while still maintaining exceptional print quality.

This capability extends to treated and uncoated papers as well, giving you the flexibility to work with a wide range of substrates.

## Paper Stabilizer Technology

Our exclusive Paper Stabilizer technology is at the heart of the innovation within the press, allowing you to print on coated papers without the need for a primer. This technology stabilizes the paper's moisture content, ensuring stable print surfaces, reducing paper-related variations, and increasing productivity. With this feature, print quality is enhanced, and paper stability is maintained throughout the process. This capability extends to treated and uncoated.

## Tension Control

The Paper Stabilizer, combined with our tight-web system, ensures accurate drop placement and precise print registration, regardless of paper type.

# A look inside



## 9: Finishing

Connect to optional OEM rewind unit or an array of third party options, including rewind, cut-stack, folding, and more using our slack web interface unit.

## 8: Operator Control Panel

Large touchscreen Graphical User Interface (GUI) display controls machine operation and setup from one convenient point.

## 6 & 7: Multi-Phase Drying

Our advanced multi-phase drying system combines forced hot air, Infra-red (IR), and contact heating via a Heat Drum to ensure that output dries quickly and efficiently.

## 5: Print Head Array

Liquid cooled printheads provide high quality output at up to 1200 x 1200 dpi with variable drop sizes for smooth gradations and precise ink placement. This results in vivid, consistent color across a variety of media types.

## 4: Paper Stabilizer

Our exclusive Paper Stabilizer technology is at the heart of the innovation within the press, allowing you to print on coated papers **without the need for a primer**. This technology stabilizes the paper's moisture content, ensuring stable print surfaces, reducing paper-related variations, and increasing productivity.

## 3: Edge Guide

An active paper steering system controls the web. This starts the process of accurate drop placement and registration.

## 2: Tension Control

The paper is controlled using a highly stable tight-web system resulting in accurate drop placement and print registration.

## 1: Unwinder

The integrated paper unwinder increases overall paper control and stability. Simple user operation makes loading new rolls quick and easy.

## 10: VIVIDIA Ink Set

Our advanced ink set provides crisp, vibrant colors every time, with exceptional detail. These CMYK inks are combined with our color management workflow ColorPath, produce a broad color gamut and meet GRACoL 2013 standards.



## Slack Web Unit (Optional)

Printer can also be connected to 3rd party finishers (loose tension type) by using the slack web unit. The unit applies tension to roll paper instead of the rewinder.

# High-speed full-color printing

Operating at speeds of up to 525 feet per minute, the J Press 1160CFG delivers both high productivity and superb quality. Whether you're printing high end brochures or direct mail postcards, this press is designed to handle a wide range of jobs.

## Two distinct print modes to suit various job requirements:

### Quality mode:

Ideal for high-quality printing, delivering 262 feet per minute at 1200x1200 dpi. This is perfect for all papers and applications that demand top quality.

### Speed mode:

Optimized for high-volume runs, this mode can achieve speeds of up to 525 feet per minute at 1200x600 dpi when fast production is needed.

## Additional features of the J Press 1160CFG:

### Print head array

The press features a liquid cooled printhead array with variable drop sizes, ensuring smooth gradations and precise ink placement. This results in vivid, consistent color across a variety of media types.

### Vividia ink set

Our Vividia Aqueous Pigment Ink Set provide crisp, vibrant colors every time, with exceptional detail. These CMYK inks combined with our color management workflow ColorPath, produce a broad color gamut and meets GRACoL 2013 standards.

### Multi-phase drying technology

Our advanced multi-phase drying system combines forced hot air, Infra-red (IR), and contact heating via a Heat Drum to ensure that output dries quickly and efficiently. This system is critical for reducing delays between printing and finishing, ensuring faster turnaround times.

### Active cooling system

Our active cooling system has three dedicated chiller units. Two that actively cool the paper, and one dedicated to the printheads, keeping them at a consistent operating temperature. This active cooling prevents paper from overheating and ensures that print quality remains stable front to back, even during long runs.



# Color is hard ColorPath makes it easy

**Deliver high-quality, consistent and accurate color output while optimizing workflow efficiency and productivity.**

ColorPath, Fujifilm's cloud-based color management system, allows printers to create optimized color profiles and calibrations to print to various standards, and provides tools to ensure that over time the standards are continually adhered to, all while achieving superior print results and meeting the demanding requirements of today's print market.

## Manage and monitor color performance

The key to good color management is the creation of accurate device link color profiles, the ability to easily print to ISO standards, and above all to have a system that makes it easy to check and verify that standards are continuously being met. All of this and more is achieved with XMF ColorPath. Optimized curve data and ICC profiles can be quickly and easily created in the cloud and deployed for everyday production within XMF Workflow.

### Key features

- Cloud-based color management
- Align offset and digital presses to ISO or G7 standards
- Optimize ink usage while maintaining conformance to ISO and G7 standards
- Create optimized color profiles to allow for GRACoL and FOGRA standard proofing
- Verify if digital proofs and prints are within the tolerance limits of industry standards

G7® and GRACoL® are trademarks of Idealliance



Color Management in the Cloud®

## Working towards a more sustainable future

The J Press 1160CFG can replace traditional offset production for a variety of print jobs, therefore bringing the sustainability benefits of digital printing to a wider range of print production.

The many environmental benefits of digital print are well documented, including the elimination of make-ready waste between jobs, the removal of the plate production process, the requirement for fewer press chemicals, and smaller stock holdings due to the on-demand nature of digital printing.





# Built for your business

## Key scenarios where the J Press 1160CFG may fit your business:

### High quality publications

Whether personalizing variable content or producing short to medium-length runs, the J Press 1160CFG has the quality and speed to help you compete. Produce high-quality full-color books, journals, brochures, and catalogs on a wide range of light to heavyweight stocks in a variety of finishes. The J Press 1160CFG is built to handle high-speed high-resolution printing with consistent color accuracy, ensuring that every piece reflects your brand's professionalism and attention to detail. Its advanced variable drop size inkjet technology provides sharp, crisp text and vibrant images, making it ideal for high-end publications where the visual quality is paramount.

Additionally, the press supports flexible workflow integration, allowing for faster job turnaround times and smoother production cycles—essential for tight deadlines or high-demand production environments.

### Premium direct mail

Direct mail is changing to compete in an ever-more challenging communications environment. As campaigns become more creative and targeted, the J Press 1160CFG has the capability to run higher-quality mail pieces at high speed with greater consistency. The press excels at producing mail that stands out, delivering excellent print quality for personalization and variable data applications.

Its ability to handle diverse substrates means you can create eye-catching, high-impact mailers that catch the attention of the recipient. With the J Press 1160CFG, businesses can efficiently scale up campaigns while maintaining high-quality output, making it the perfect tool for personalized, high-end direct mail solutions that deliver results. Moreover, its fast setup times and minimal waste enhance the overall cost-efficiency of direct mail production.

## Move away from analog

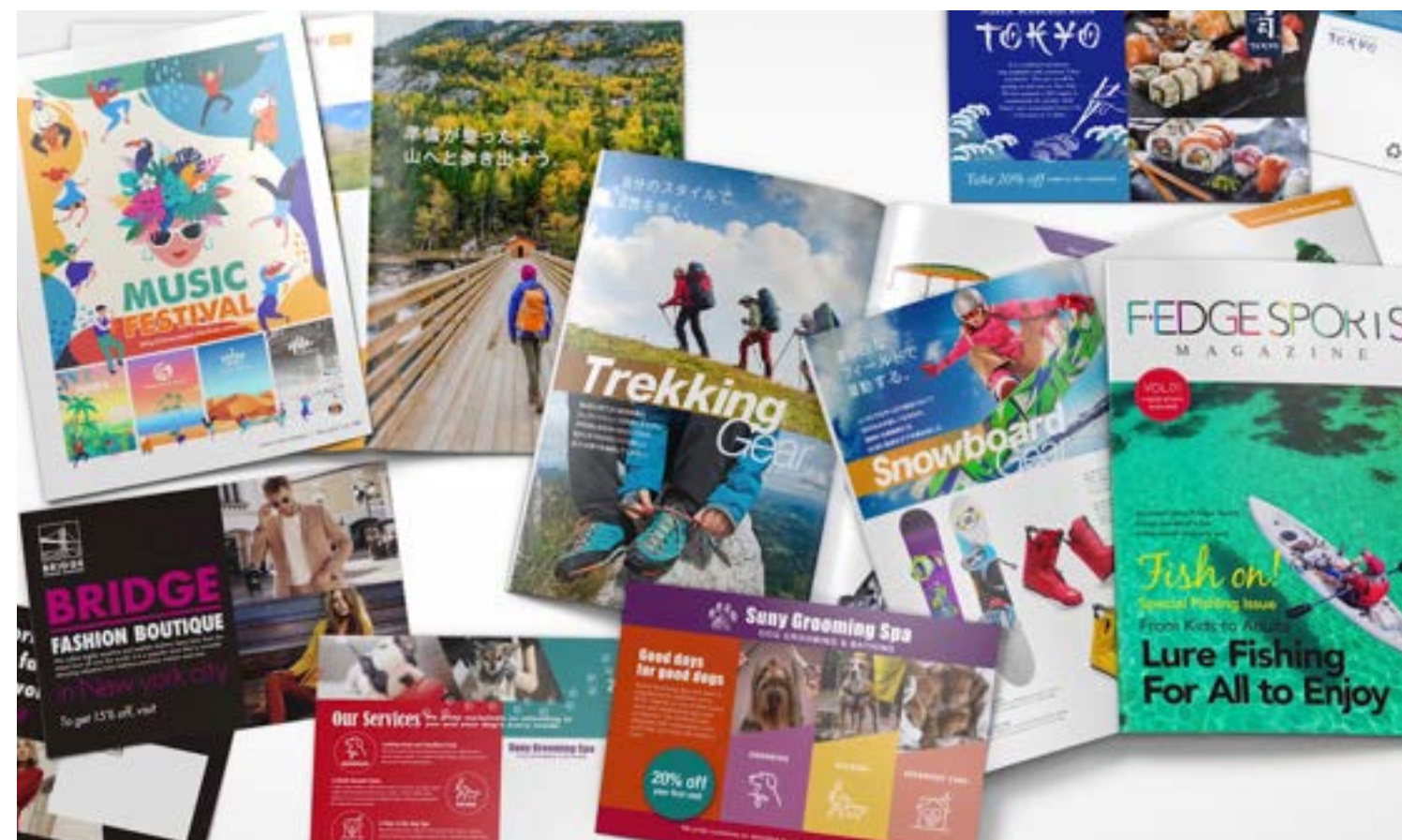
Offset printing presses are ideally suited to long-run, static jobs but are increasingly being used for short to medium-run work. Presses become stacked with inefficient work, leaving little time for the jobs that pay. Jobs moved to the J Press 1160CFG can be produced on the same paper stocks at comparable quality using technologies exclusive to Fujifilm.

The J Press 1160CFG's digital printing technology allows for greater flexibility, eliminating the need for costly setup times and reducing paper waste compared to traditional offset presses. With its quick-change capabilities and exceptional ink adhesion, the press supports a range of applications that are traditionally challenging for analog presses.

Additionally, the integration of Fujifilm's unique technologies, such as their proprietary Vividia ink and imaging systems, ensures that the J Press 1160CFG delivers consistent and reliable results, even for variable content, all while optimizing print speed and cost per page.

## Maximize the benefits of this exclusive system with Fujifilm:

- A deep understanding of the print industry with over 90 years experience - from the supply of offset plates and film to the latest digital technologies.
- A heritage in inkjet printing over the last 25 years including the award winning J Press 750 B2 Press
- A history of roll-fed inkjet printing, with strong market share worldwide.



# Technical specifications

J PRESS 1160CFG	
<b>TECHNOLOGY</b>	
Printer configuration	In-line Twin Engine Duplex (Perfecting) Four Color Press
Printheads	Liquid cooled piezoelectric drop-on-demand inkjet Three level halftone per drop
Ink Set	VIVIDIA Aqueous CMYK Pigment Inks
<b>PRODUCTIVITY</b>	
Print Speeds*1	Quality Mode : 262 ft / min at 1,200 x 1,200 dpi Speed Mode : 525 ft / min at 1,200 x 600 dpi
Max Duty Cycle	137,500 Letter imp. per hour / 27,200 B2 imp. per hour 69.3M Letter imp. per month / 13.7M B2 imp. per month
<b>SUBSTRATE</b>	
Media Type	Offset Coated Gloss, Matte, Silk, Dull, Inkjet Treated, Uncoated
Paper Weight*2	64 to 250 GSM
Web Width	6" to 20.5"
Print Width*3	Up to 19.5"
<b>PHYSICAL DATA</b>	
Dimensions (LxWxH)	43.0' x 14.3' x 7.8' (with optional OEM Rewind Unit) 33.8' x 14.3' x 7.8' (with optional Slack Web Interface Unit)*4
Weight	29,664 lbs. (with Rewinder) 26,679 lbs. (with Slack Web Unit, without Rewinder)

<b>OPERATING ENVIRONMENT</b>	
Temperature	68 - 79°F (20 - 26°C)
Humidity	30 - 60% RH
Operating Noise	79dB(A), Printing
<b>POWER REQUIREMENTS*5</b>	
Main Print System	400 VAC/300A (208kVA) 200 VAC/250A (87kVA)
Paper Stabilizer	400VAC/150A (104 kVA) 200VAC/75A (26kVA)
Print Server	200-240VAC/16A (2x) 200-240VAC/5A
<b>OPTIONAL EQUIPMENT</b>	
Options	Third-party finishing, web cleaning, inspection systems, and software

\*1: Speed and Quality settings are determined by paper and application. Additional speed and quality modes possible based on testing and approval from Fujifilm, Graphics Communications Division.  
 \*2: Additional paper weights and types possible with testing and approval from Fujifilm, Graphics Communications Division.  
 \*3: Reduced print width of 19.3" may be required on some papers and alienations.  
 \*4: Slack Web Interface Unit is required to connect to third party finishing devices including rewind, cut/stack and more.  
 \*5: Additional power required for optional equipment including inspection system, web cleaning, and post processing. Verify all power requirements and connection with Fujifilm service.  
 \*All values are targets and subject to change without notice. The name FUJIFILM and the FUJIFILM logo are trademarks of FUJIFILM Corporation. All other trademarks shown are trademarks of the owners. All rights reserved.



# A partner you can count on

Considering service and support should be a key part of your purchase decision.

## Manage devices more easily to up your ROI.

On-board tools supported by proactive, predictive maintenance make it easier to maximize investments.

We help protect your investment with remote services, including smart, proactive monitoring that helps eliminate unplanned downtime.

Alerts are sent to our service experts so they can preempt performance issues with timely supplies and consumables delivery, remote troubleshooting or on-site support.

